

markilux® 730/830

The Drop-arm Awning
with Gas Piston-driven Arms

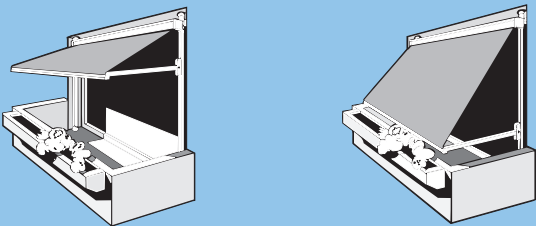
Drop-arm Cassette Awning markilux® 730/830

with gas pistons



- markilux® 730

The powder-coated, aluminium accro bars for the markilux® 730/830 are clamped top and bottom and have to be fixed in place; their height is adjustable between 220 cm and 320 cm (surcharge)



The drop arms of the awning can be fixed in any position on the accro bars so virtually any cover pitch can be achieved. If the cover is in your way, simply raise it. (The accro bars must be fixed in place.)



- Gas pistons at arm pivot point



- Profile view markilux® 730

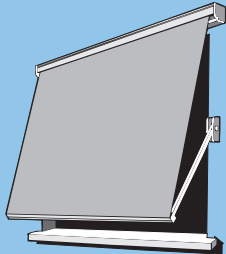
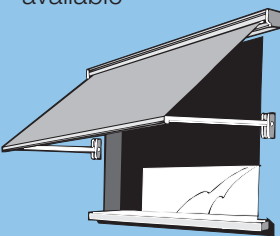


- Profile view markilux® 830

Optional Accessories:

Electric operation and automatic control systems
Interior operation
Wedge-in accro bars

- drop arms utilise gas pistons to ensure optimum cover tension
- sturdy, self-supporting cassette
- one-piece, sturdy cassette profile which allows unlimited face and top fixture
- manual operation by means of universally jointed coupling and bayonet fitting
- alternatively can be used a tubular motor with electronic limit switching
- covers can be made of stitched Perfotex, seamless or stitched acrylic and transolair fabrics or Soltis 92
- coupled units have an adjustable coupling flange
- manual operation from inside the building is also available



- completely covers the window as the arm can pivot through 140° (except in the case of the 150 cm arm length) - p. 730/830-4

We reserve the right to make alterations without giving prior notice.

Drop-arm Cassette Awnings

(with gas pistons)

markilux® 730 = square cassette

markilux® 830 = round cassette



Dimensions	Stand. widths in cm.		75	100	125	150	175	200	225	250	275	300	350	400	450	500	550	600	650	700	Approx. handle revs. gear ratio 6 : 1	Approx. extension time in sec. ¹⁾			
	Cover length																				Standard motor	Rad.-contr. motor			
	120	arm length 80 cm																			27	19	19		
	160																				37	25	25		
	160	arm length 100 cm																			37	25	25		
	200																				48	31	31		
	200	arm length 120 cm																			48	31	31		
	250																				59	37	37		
	200	arm length 150 cm																			48	31	31		
	250																				59	37	37		
			2 universal brackets										3 universal brackets		3 arms, 3 universal brackets, nylon roller support (the cover is split in the middle)								17 rpm ²⁾	17 rpm ²⁾	
Available Accessories	Manual operation; winding handle with funnel connector; handle lengths: 110, 140, 160, 180, 220 cm.		<input checked="" type="checkbox"/> gear is fitted with a universal joint and mounted inside the cassette																						
	Interior manual operation**		<input checked="" type="checkbox"/> only for single units with two arms																						
	Electric operation		<input checked="" type="checkbox"/>																						
	Frame polyester powder coated as standard in colour*		<input checked="" type="checkbox"/>																						
	Cover made from a brand make of acrylic fibre sunsilk or Perfotex		<input checked="" type="checkbox"/>																						
	swela transolair		<input checked="" type="checkbox"/>																						
	SOLTIS 92		<input checked="" type="checkbox"/> seamless covers up to a drop of 170 cm. larger drops have a horizontal seam from a fixture width of 178 cm.																						
	Not available:		fabric series 364xx, PVC fabrics (ERA, Mehler etc.)																						
<p>* White: RAL 9016, brown: RAL 8019, metallic aluminium: RAL 9006. Other RAL colours are available. Lead times will be given on request.</p> <p>**This operation type demands exact fixture and generally speaking is more expensive for the end consumer. We suggest therefore, that a radio-controlled motor be recommended to the customer.</p>																									
<p>A maximum of two single units can be joined to make a coupled unit, which may have a maximum of 4 arms and will only be supplied with a motor (surcharge). Maximum width: 2 x 400 cm.</p>																									
<h3>Smallest awning width</h3>																									
Standard motor												75 cm													
Radio-controlled motor												75 cm													
<h3>Manual operation (gearbox types used)</h3>																									
	eye	gear reduction	end-stop with without	worm gear	articulated joint	order number																			
Standard	<input checked="" type="checkbox"/>	6 : 1	<input checked="" type="checkbox"/>	<input checked="" type="checkbox"/>		713400																			
Interior operation		6 : 1	<input checked="" type="checkbox"/>	<input checked="" type="checkbox"/>	<input checked="" type="checkbox"/>	781200																			
operation from the rear	<input checked="" type="checkbox"/>	6 : 1	<input checked="" type="checkbox"/>	<input checked="" type="checkbox"/>		786921																			
<h3>Motors</h3> HiPro motor with electronic torque reduction mechanism and timed cut-off switch when being retracted																									
Electric operation for single units up to a width of 400 cm.												Order No. 706781 „R“ 706771 „L“													
Electric operation for single units more than 400 cm wide and for coupled units.												706681 „R“ 706691 „L“													
Radio-controlled motor for single units up to a width of 400 cm.												763321													
Radio-controlled motor for single units more than 400 cm wide and for coupled units.												763331													
<h3>Possible dimensional variations:</h3> (in mm.)																									
Overall awning dimensions												Standard widths		Intermediate widths											
												Motor	Gear	Motor	Gear										
Tolerances in the width												+ 0 / - 10		+ 0 / - 10											
Tolerances in the extension												+ 20 / - 20		+ 20 / - 20											
<h3>Awning cover sizes:</h3> (in mm.)																									
												Motor	Gear												
Cover width = (deduct from awning width)												70	90												
Cover length = (add to awning extension)												0	0												
<h3>Awning cover tolerances:</h3> (in mm.)																									
(Tolerances in the width and drop of the cover)												From	To	Tolerances											
												0	2000	+ 5 / - 5											
												2010	4000	+ 8 / - 8											
												4010	6000	+ 12 / - 12											
												6010	7000	+ 15 / - 15											

1) **N.B.** Motor stops automatically after 3 – 4 minutes use to prevent overheating.

2) **Nominal RPM**
(In the case of contract awnings the same speed of rotation of the motors cannot be guaranteed)

The visible area of the cover when extended is not the same as the nominal cover drop. (v. the diagrams on page 730/830-4).

N.B. Measure carefully! We will not take awnings back because of incorrect size. Awnings are made to measure. If coupled awnings or blinds are to be fitted into a recess or between two walls the overall width of the coupled awning must be 6 cm less than the width of the opening to allow the awnings/blinds to be coupled together. Make a special note if an awning is to be fitted into a reveal, and note the reveal width separately. The operation side should be given as if viewed from the outside. Please consult the special notes contained in the general information/markilux® fabric collections. We reserve the right to make alterations without giving prior notice.

Drop-arm Cassette Awnings

(with gas pistons)

markilux® 730 = square cassette

markilux® 830 = round cassette



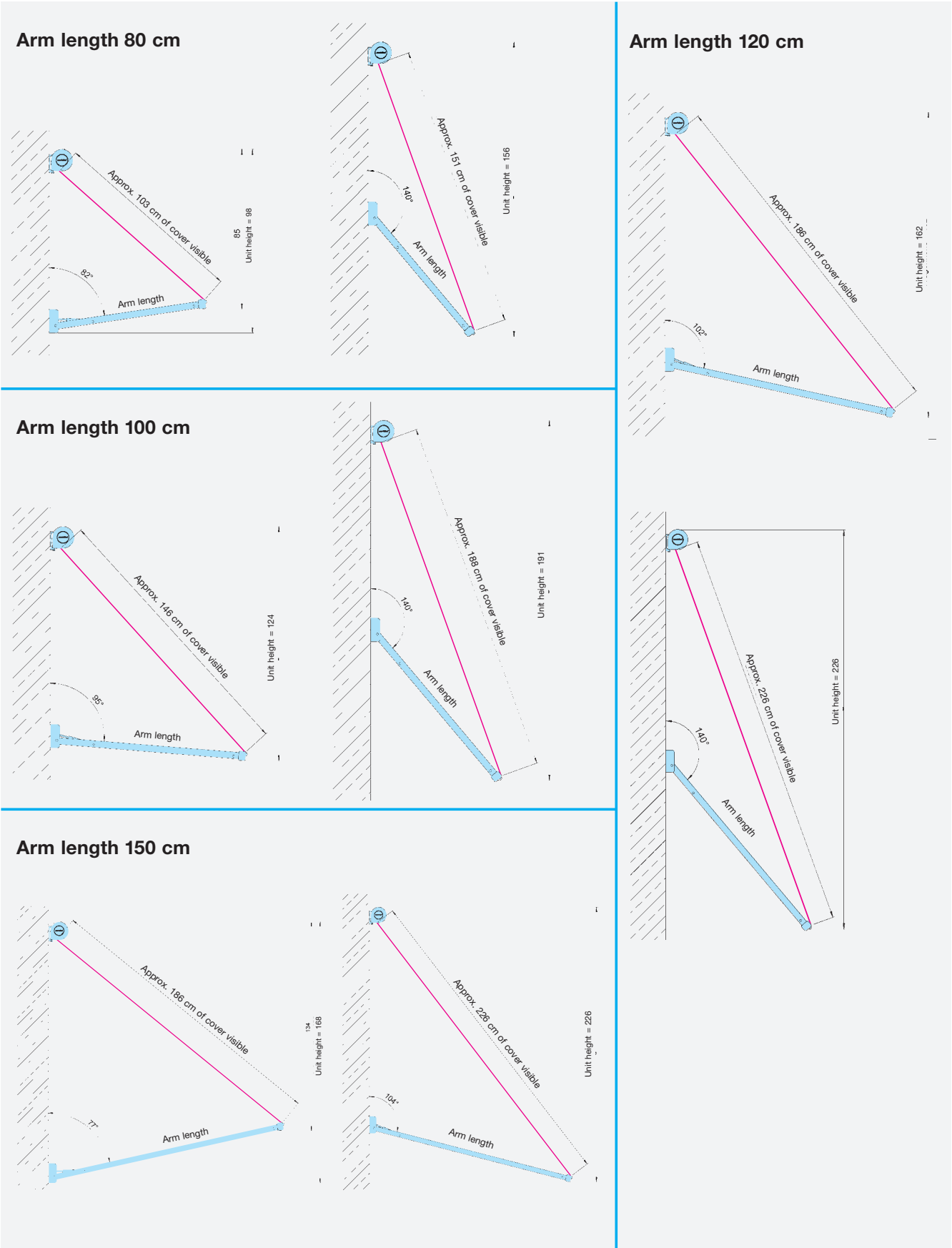
Fixtures and Accessories

markilux® 730			markilux® 830		
Part	Description	Part No.	Part	Description	Part No.
	Face fixture assembly 50 mm	78797.		Face fixture assembly 50 mm	78726.
	Universal bracket assembly 50 mm (in the case of top fixture)	78758.		Top fixture assembly 50 mm	78727.
	Face fixture assembly with plate "RH" for lateral fixture	78920. N.B.! Not for operation side: - Interior operation - Operation from the rear		Face fixture assembly with plate "RH" for lateral fixture	78748. N.B.! Not for operation side: - Interior operation - Operation from the rear
	Face fixture assembly with plate "LH" for lateral fixture	78921. N.B.! Not for operation side: - Interior operation - Operation from the rear		Face fixture assembly with plate "LH" for lateral fixture	78749. N.B.! Not for operation side: - Interior operation - Operation from the rear
	Face fixture assembly for coupled units for central fixture	78922.		Face fixture assembly for coupled units for central fixture	78745.
markilux® 730 and markilux® 830					
	Angled plate for reveal fixture 120 x 100 x 60 mm	77220.		Stand-off tube 30 x 9.5 mm N.B.! max. stand-off distance = 120 mm	701668
	Angled plate for lateral arm 100 x 40 x 125 mm	78913.		Angled plate for lateral arm fixture Bearing/motor side 65 x 40 x 125 mm	78912.

. = insert RAL colour code no.

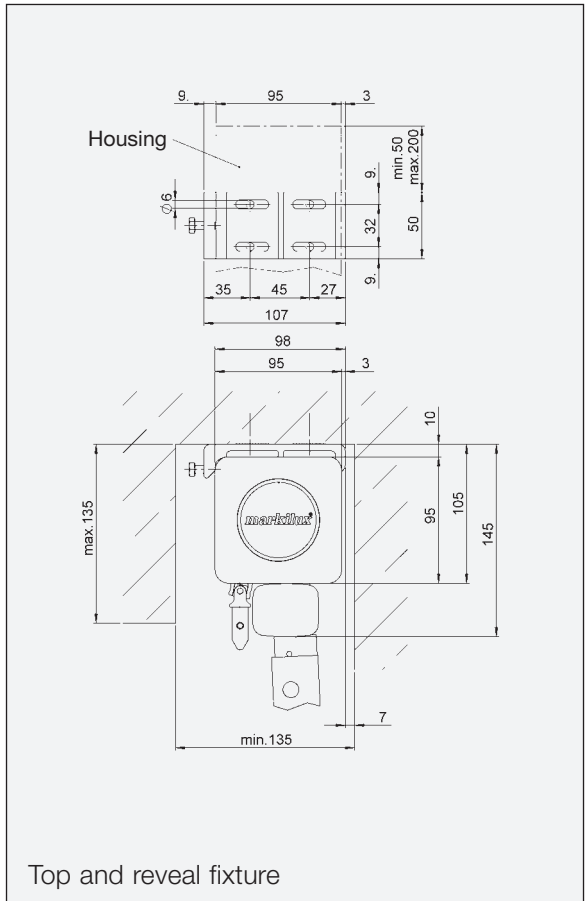
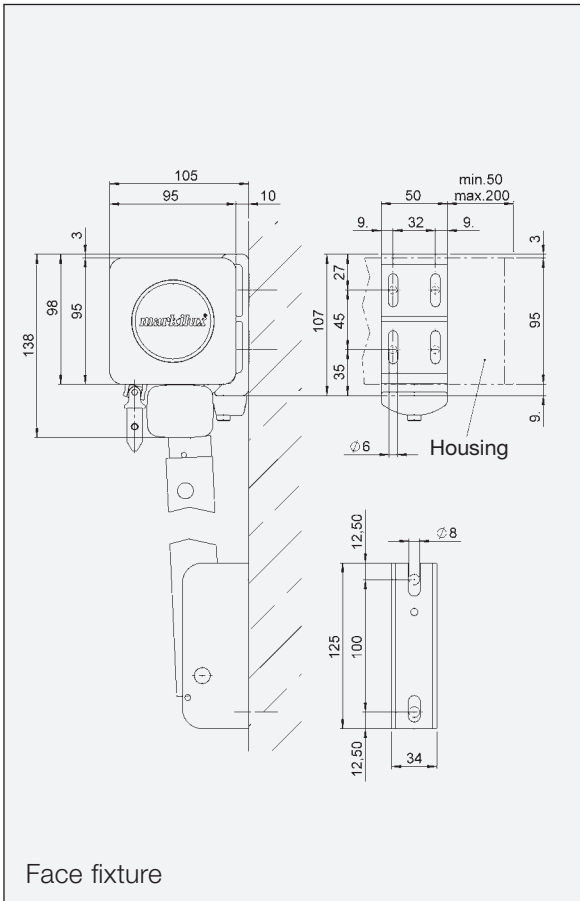
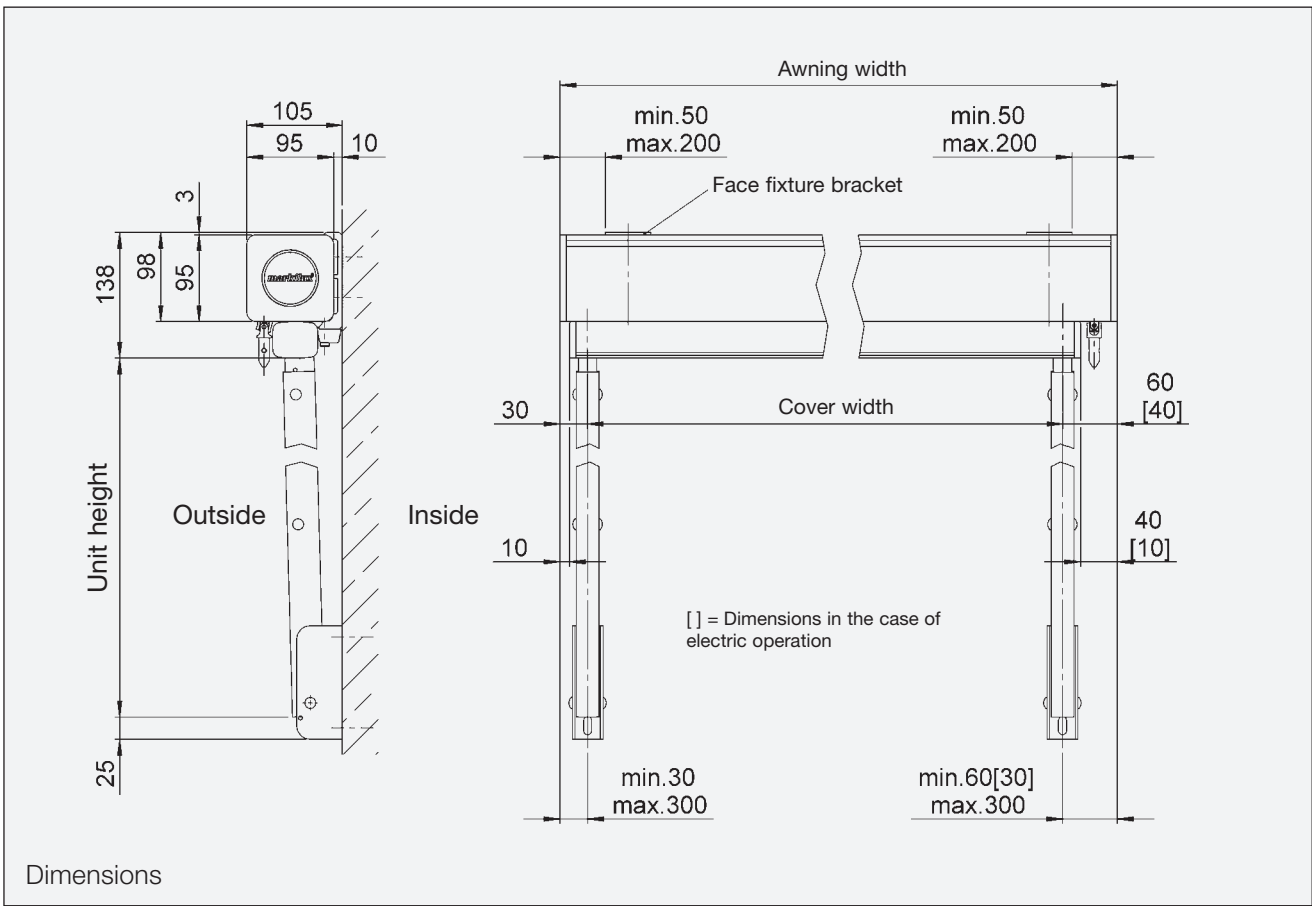
We reserve the right to make alterations without giving prior notice.

Window coverage using the Drop-arm Cassette Awnings markilux® 730/830

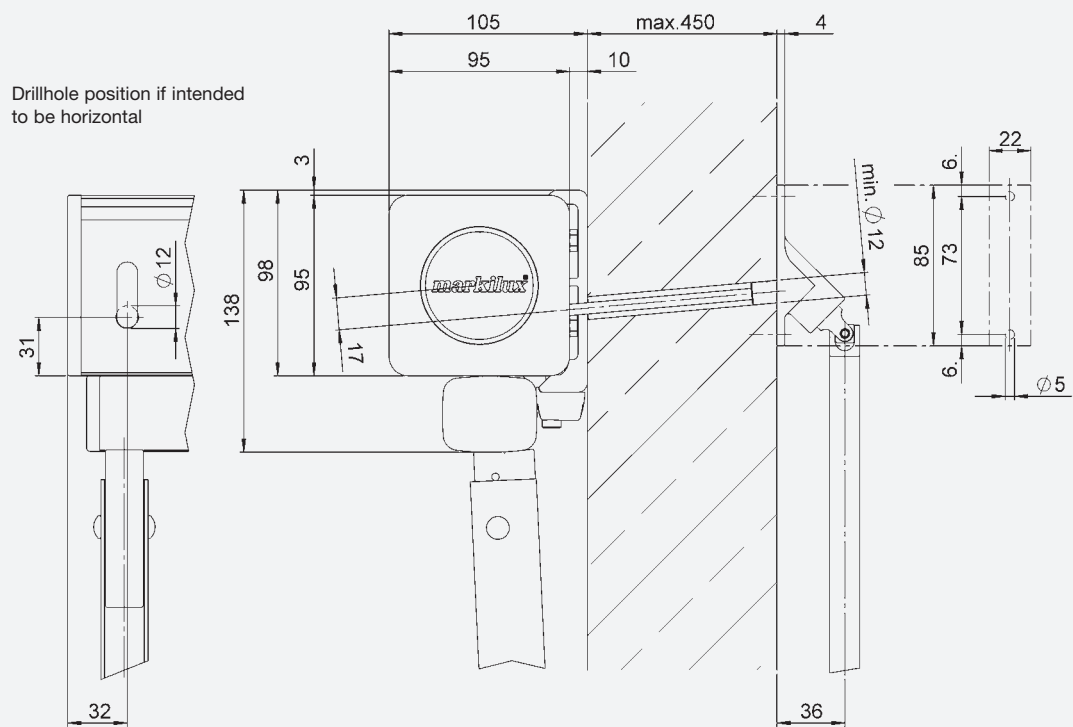


The diagrams are valid for both the markilux® 730 and 830.

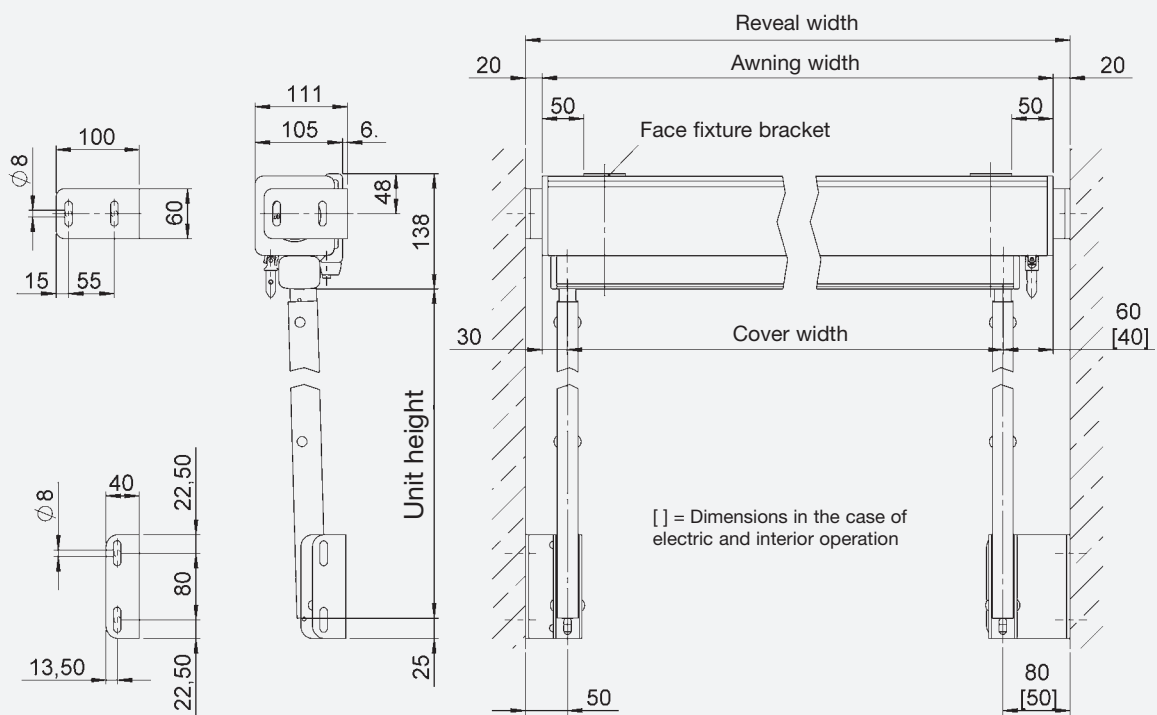
How to fit the Drop-arm Cassette Awning markilux® 730:



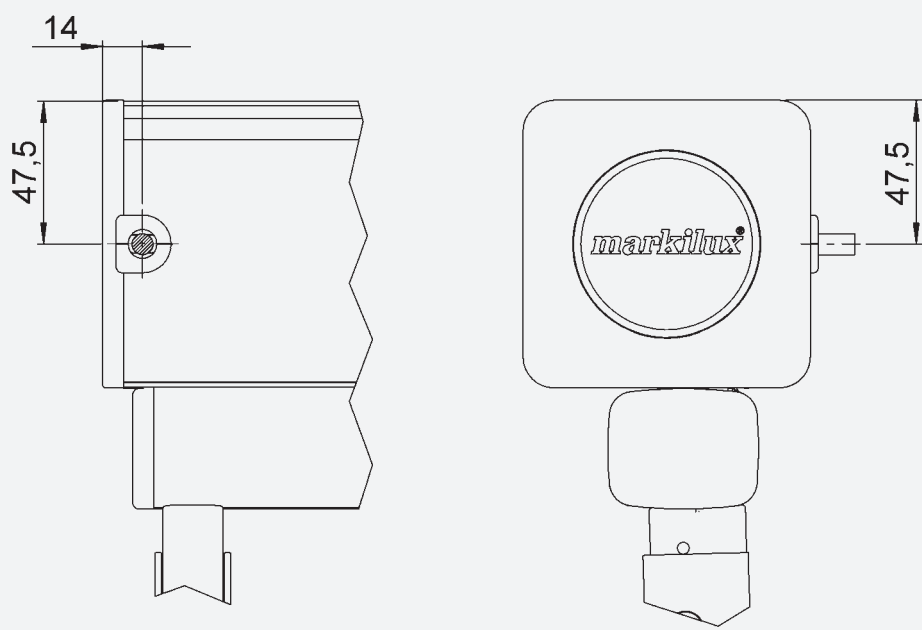
How to fit the Drop-arm Cassette Awning markilux® 730:



Face fixture with interior operation

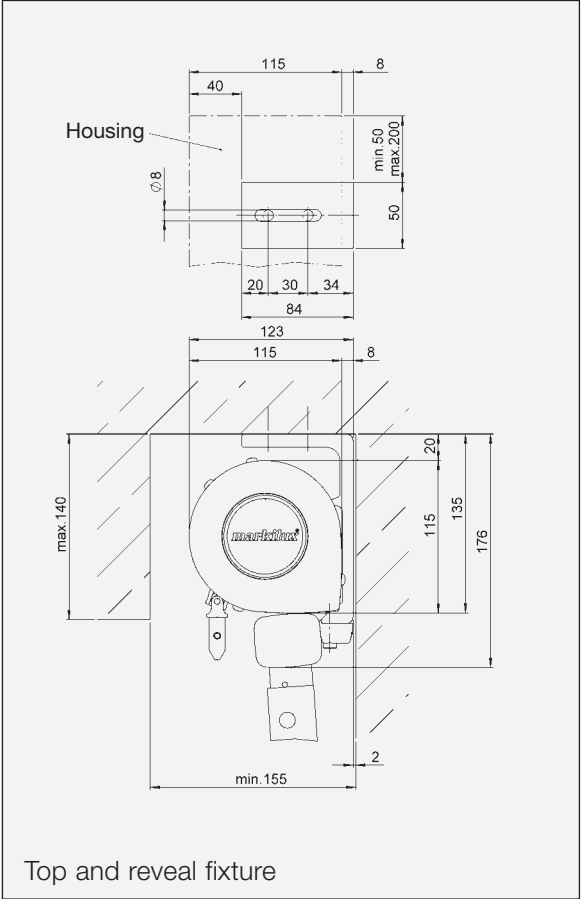
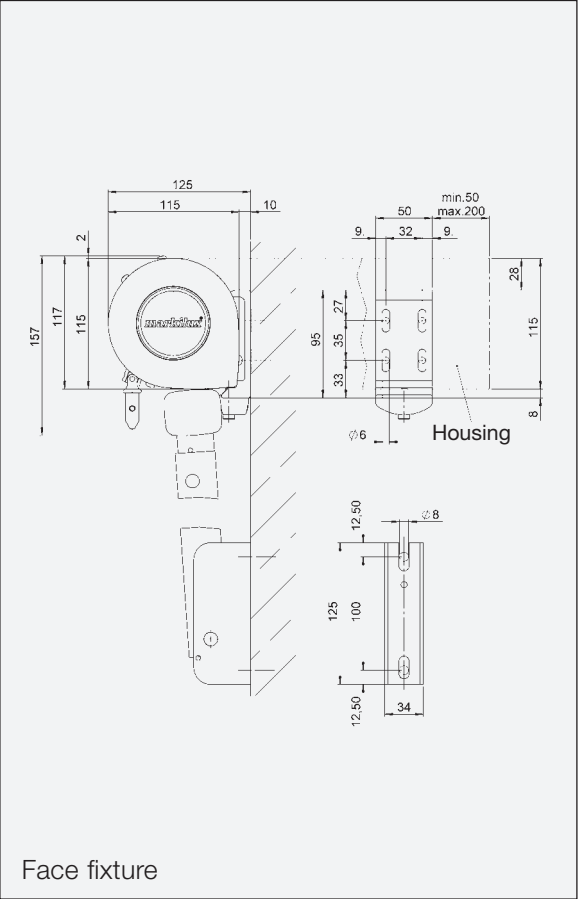
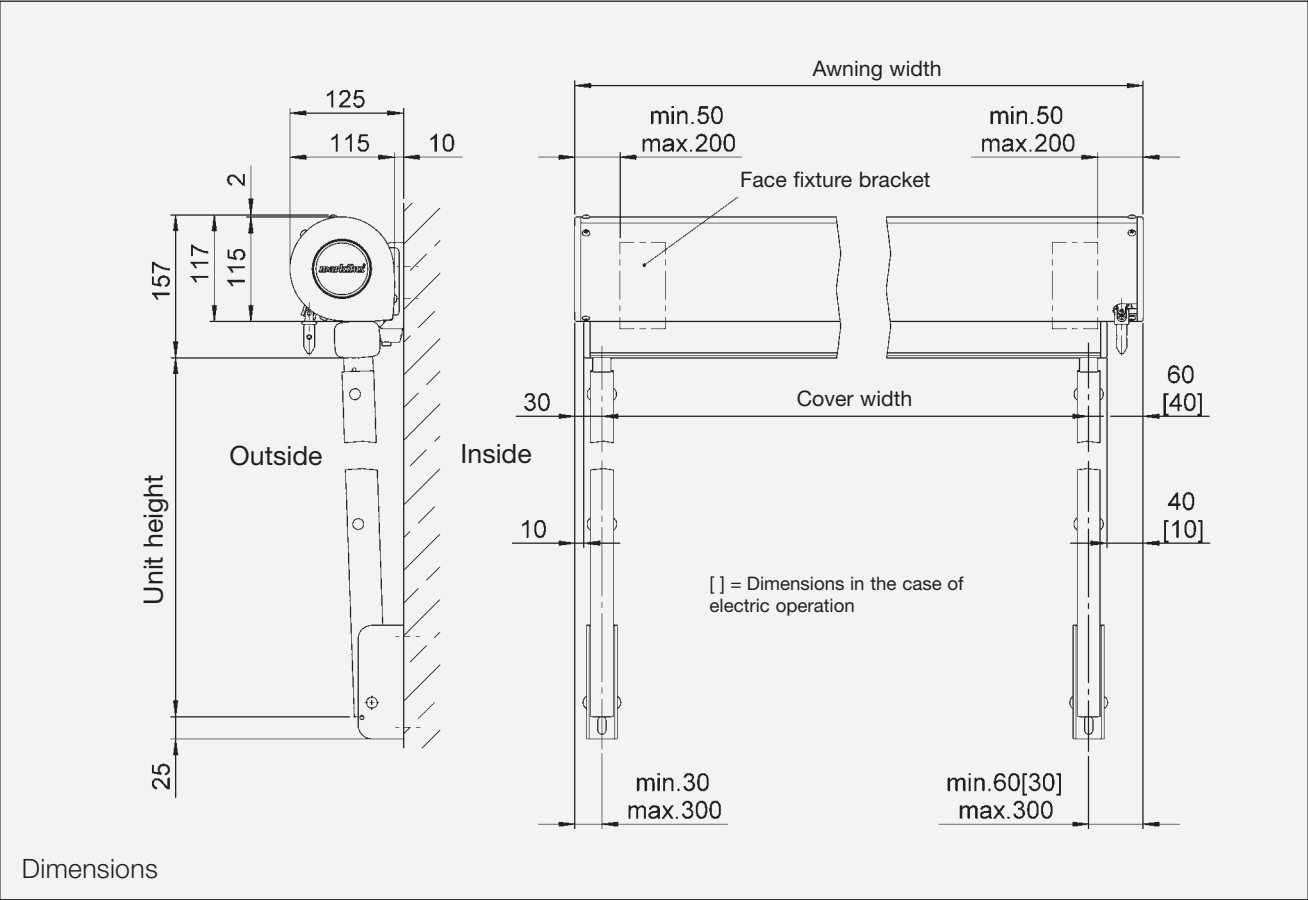


How to fit the Drop-arm Cassette Awning markilux® 730:

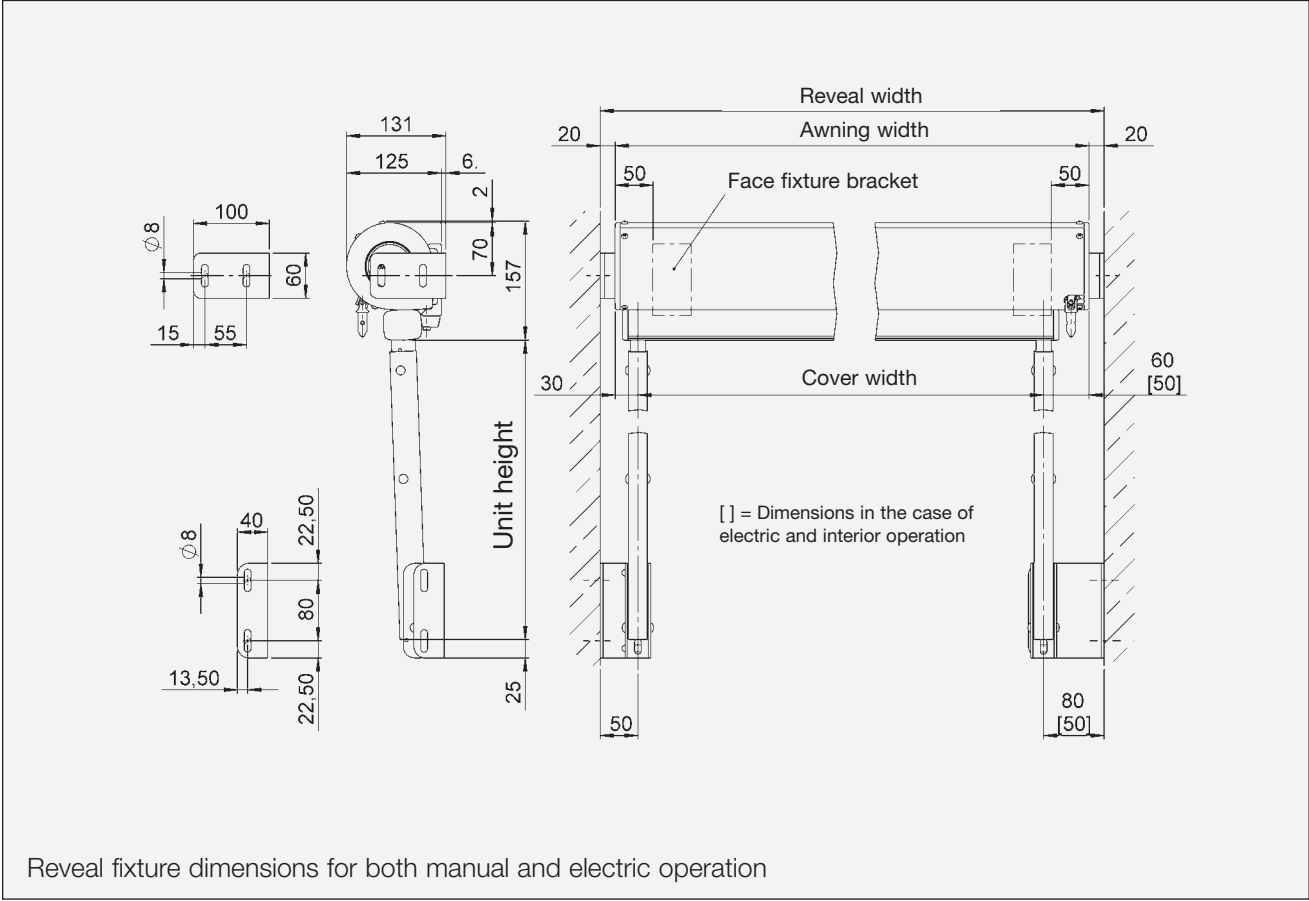
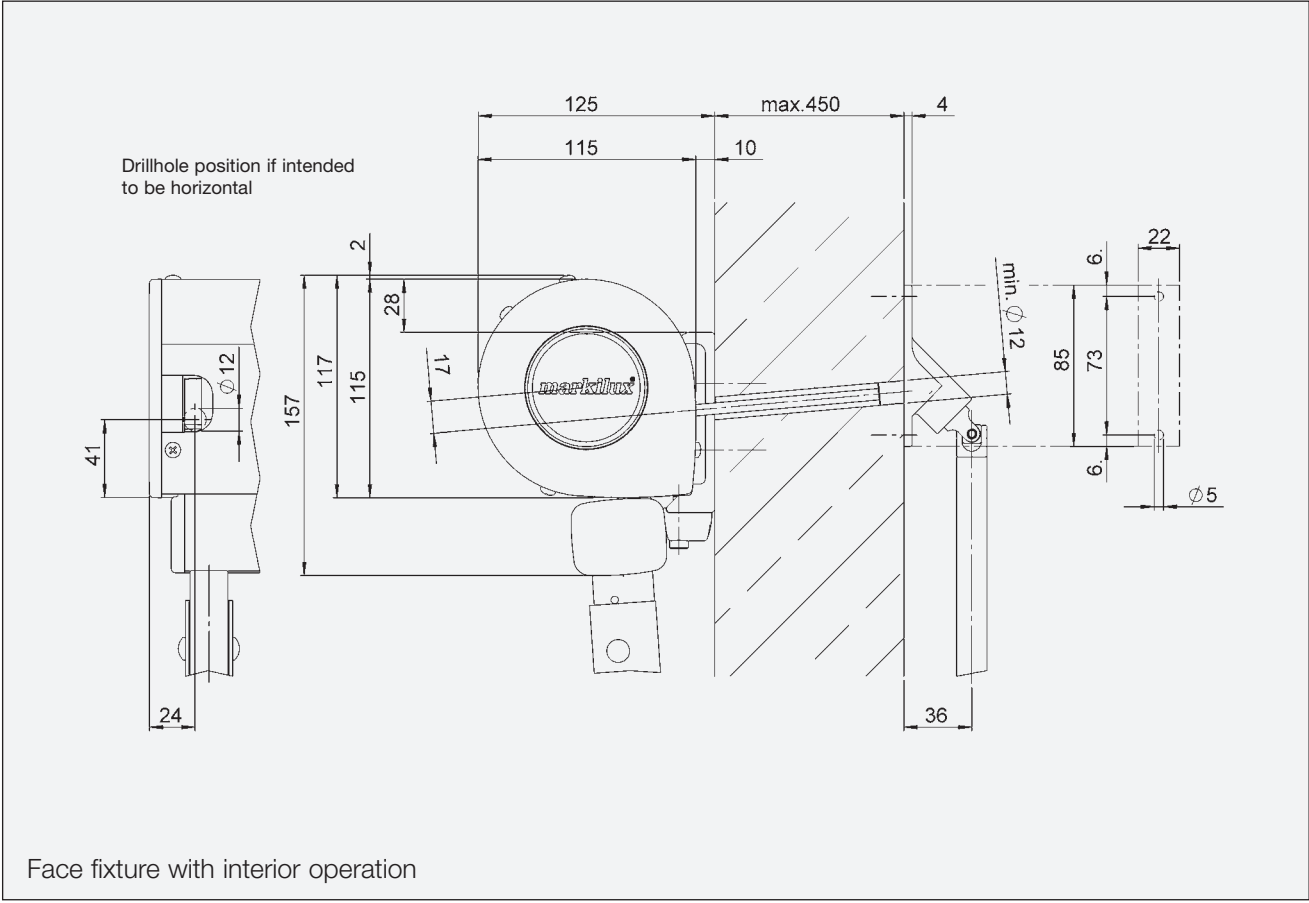


Cable exit on motor-driven units

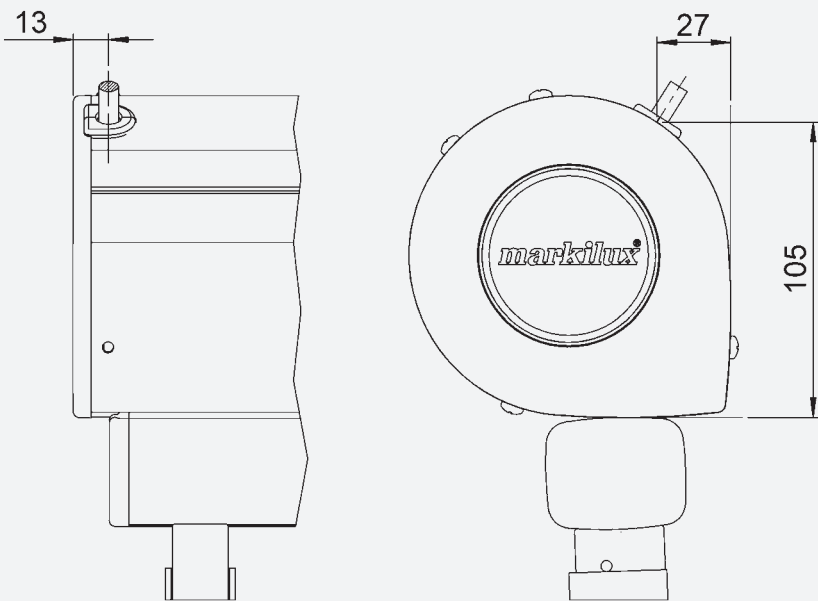
How to fit the Drop-arm Cassette Awning markilux® 830:



How to fit the Drop-arm Cassette Awning markilux® 830:



How to fit the Drop-arm Cassette Awning markilux® 830:



Cable exit on motor-driven units